

TENOR

You've Got A Friend

Carole King

Arr: Ian Laurence 2018



When y' down_ & troubled and y' need some lov ing care_ & no-thin'
sky_ a - boveyou should grow dark & full of clouds_ & that oldNorthwind



no thin'is go - in' right_ Close your eyes & think of me & soon I will be there
it_ be gins to blow_ Keep your head to - ge - ther & call ma' name out loud



_ to bri-ghten up e - ven your dar-kest night_ You just call
_ Soon you'll hear me kno-ckin' at your door_



_ out ma' name_ & you know, where e-ver I am_ I'll come ru-nnin'



to see you a-gain_ Win ter Spring Su mmer or Fall_ All you got t' do is call



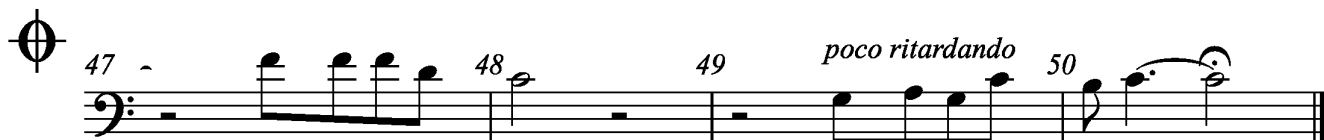
_ & I'll be_ there yes I will_ You've got a friend_ You've got a friend_



If the Dm dm dm dm Dm dm dm dm peo-ple can be so



cold_ Ooh ah ooh ah ooh You just call



You've got a friend_ You've got a friend_